



SURYA SURINDO GROUP

JULY
20
24

COMPANY PROFILE

SURYA SURINDO GROUP

PT. SURYA SURINDO SAGARA
FREIGHT FORWARDING

PT. SURYA SURINDO DUNIA
TRADING

PT. SURYA SURINDO NUSANTARA
SHIPPING AGENCY

Experience reliable and efficient freight forwarding services tailored to meet your global trade needs.

▶ SSG ID

🌐 www.ssgid.co.id

ABOUT US



Established on September 2021 and duly licensed by Indonesian Government, located in Jakarta, Indonesia”.

We understand your business and have the flexibility to respond to dynamic and challenging operational requirements.

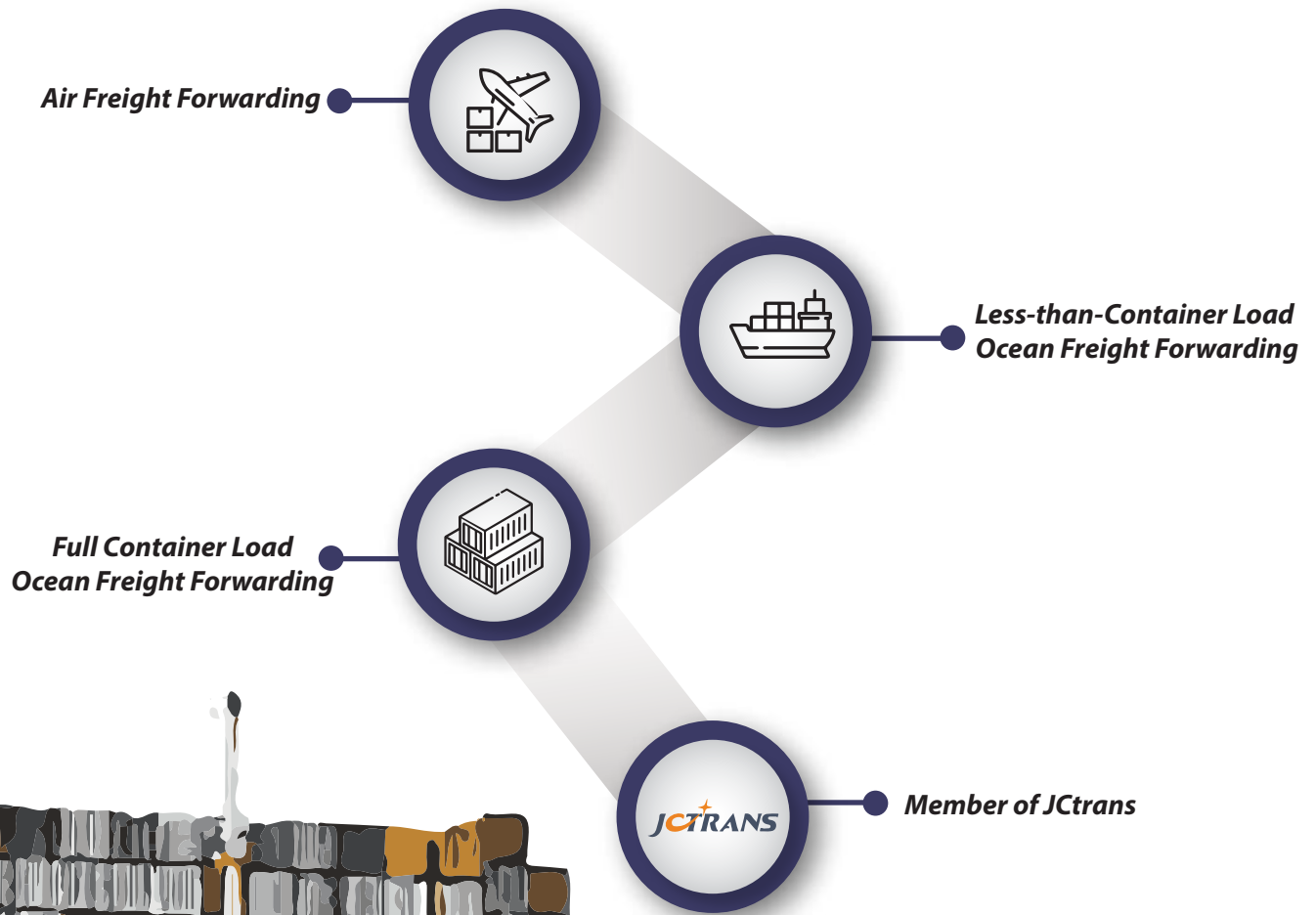


PT. SSS, PT. SSN and PT. SSD is Sister Company of SURYA SURINDO GROUP

GLOBAL FREIGHT FORWARDER

“SSS has an international worldwide network as well as a strong relationship”.

you can get quotes for the following services :



Work Scope



- Project Cargo Handling
- General Import & Export by Air
- General Import & Export by Ocean
- General Domestic Air & Ocean
- Local Trucking. Box, FCL, Special trucks
- Warehousing / Management
- Chartering LCT & Barge
- Chartering Bulk Vessel
- Break bulk Cargo Import & Export & Domestic
- AIR Chartering, Domestic International
- Vessel Spare Part Import & Domestic
- Ship Local Supply

SSS Express

Service between 'Korea-Indonesia'

"SSS Express" is our best service for below 100 kg cargo, most of 80-90% of Spare Part in Indonesia is below 100 kg. Faster custom process for urgent shipment to Indonesia. 1 day customs (Mon-Sat) + delivery domestic.



Time - After Cargo Arrival At CGK Airport

Jakarta / Cigading Area (2-3 days).
Surabaya / Semarang / Banjarmasin/ Balikpapan / Lampung Area (3-4 days).
Samarinda / Tanjung Bara / Tarakan / Medan Area (3-4 days).
Any Other ports Please request to us.

EXAMPLE CASE FOR

DELIVERY ON BOARD

Vessel in Kotabaru

- Day 1 - Spare part from Busan to Incheon : 8hrs to Incheon by express courier.
- Day 2 - Incheon to Jakarta : Next day before 12:00.
- Day 2 - Jakarta to Banjarmasin : Domestic Air.
- Day 3 - Banjarmasin to Kota Baru : Direct trucking & On board in the night.

Vessel in Panjang in Holiday season

- Day 1 - Spare part from Busan to Incheon : 8hrs to Incheon by express courier.
- Day 2 - Incheon to Jakarta : Next day before 12:00.
- Day 2 - Jakarta to Panjang : Domestic Air with person handcarry.
- Day 3 - Arrive Panjang On board in the night.

Vessel Parts from Japan to Sunda, Indonesia

- Day 1 - Air from Japan to Incheon T/S process.
- Day 2 - Arrive Jakarta, Transfer to Domestic Trucking.
- Day 2 - Arrive Cigading office, Communication with Vessel for RV Point.
- Day 7 - Meet the vessel on Ocean RV Point. delivery the supply.

Guaranteed Service

"All Spare part shipment handled by SSS, if delivery on board has been failed by any custom delay due to caused by SSS".

EXPORT & IMPORT CUSTOMS CLEARANCE



Our vision to be the most trusted organization to serve the community in transporting their needs safely and healthily is backed by the founder's extensive and comprehensive experience in freight forwarding, domestic and international sea and air transportation, LCL, FCL, trucking, custom brokerage services. To ensure our services to customers, we have professional and competent human resources who are committed and continuously improve their capabilities.

SSS
LOGISTICS | International Domestic & Freight Forwarding



SSS Logistics offers ground transportation services with experienced drivers. You can enjoy our trucking services both on call and contract basis



**ISUZU
ELF**

TONASE : 2130 Kg.
CBM : 13,2

P : 409cm
L : 172 cm
T : 190 cm

DOOR
L : 167 cm
T : 179 cm



**Daihatsu
Grandmax**

TONASE : 1000 Kg.
CBM : 3,8

P : 228 cm
L : 154 cm
T : 125 cm

DOOR
L : 145 cm
T : 108 cm

“Customs clearance services to make it easier for customers both for export and import needs”

PROJECT CARGO HANDLING



SSS provides a variety of ocean freight services to any destination in the world. We have technical and commercial expertise, and treat each project individually with a client-centric approach.

OCEAN FREIGHT SERVICES

When you're still wondering how to move it, we've already got something in mind. From project forwarding, general cargo services, air freight and customs clearance to inland transportation, warehousing and consulting, our experienced specialists and strong partners all over the globe have everything it takes to make sure that when it comes to moving, nothing stands in your way. Sit back, relax and watch us take care of your project. That's what we call providing our clients with turnkey solutions.



OUR SERVICES INCLUDE :

- Less Than Container Loads (LCL)
- Full Container Loads (FCL)
- Roll-On/Roll-Off (RO/RO) cargo
- Heavy lift and/or over-dimensional cargo

EXPERIENCE :

● LCT - JAKARTA - BALIKPAPAN

- Handling Import And Delivery
- 1 SET Gas Lift Compressor

● LCT - TRUCK SUK

EQUIPMENT LIST :

MODULE

Goldhofer 12 axle x 3 unit with Prime Mover

CRANE

Linkbelt : 80 Ton x 2 units
Tadano : 25 Ton x 1 unit

FORKLIFT

Toyota : 3 Ton x 1 unit



WAREHOUSE MANAGEMENT

Because one of the benefits is **coordinating the distribution of goods to avoid an imbalance in demand and supply.**



Why is warehouse management so necessary?

Operating System

1. Improved work reliability through thorough verification.
2. Expansion of business responsiveness through rapid business processing.
3. Establishing a response system in the absence of a person in charge (multi-tasking system).
4. Standardization of work makes it easy for new workers to adapt.
5. Acquisition of relevant knowledge and skills necessary for business performance.
6. Improve work efficiency through work improvement awareness and action.
7. Daily / Weekly Reports for inventory.
8. Safety Equipped while loading / unloading containers & trucks.

Service Goal

1. Minimize error for in/out cargo.
2. Comply with delivery time.
3. Real-time Inventory information and delivery information (reliability).
4. Securing safety from damage and loss.
5. In case of emergency, it is immediately communicated to the customer and responds quickly.
6. To minimize customer loss.

Warehouse management includes six core processes. Each process influences the efficiency of the next, so every step must be optimized for the warehouse operation to run like a well-maintained machine :



Receiving

Check in and log incoming items. Verify that you're receiving the right quantity, in the right condition, at the right time.



Put-Away

Move items from the receiving dock to their correct storage locations.



Storage

Safely store and logically arrange inventory to enable fast and accurate picking.



Picking

Collect the items needed to fulfill sales orders.



Packing

Prepare the picked items for shipment. They must be safely packed into the correct packaging with an accurate packing slip.



Shipping

Send out the finalized sales orders, ensuring that they are on the right vehicle, at the right time, with the correct documentation, so customers receive their orders on time.

OVERSEAS MOVING

Moving house overseas

Moving several boxes or your whole apartment overseas,

the moving and shipping companies can help you to decide which kind of transport to choose for that. There are three ways to do this: by sea, by air or by land. The method you choose usually depends on the destination. Whether it is the same continent or not, the total distance you need to move and also on your budget. The amount of time required is another crucial factor. The moving and shipping companies are able to provide you with all the information and suggest to you the optimal solution. Even if you need to go to another continent and you wish to transport your load by either sea or air, companies have partners or international offices to deliver your load from the port to its final destination.

PROFESSIONAL TEAM

With best-in-industry materials, unequalled equipment and a highly certified crew you can rest assured all your belongings are well packed and in safe hands start to finish.



OVERSEAS MOVING

Moving overseas is often a stressful time for many people. If you are moving for an extended period of time, you can easily find an international mover. Perhaps it is for your entire apartment or just a few particular belongings that you want to move overseas. Here you will find the right moving or shipping company for your overseas move by comparing prices and services of several international movers. Save yourself time and money now!

DOOR-TO-DOOR SERVICE

We focus on the move so you can focus on what's really important your family, your friends, your farewell and, most importantly, your future.

How to use SSS for your overseas move choose the country you are moving from and to select the movers you want to get quotes from receive free quotes for your international move overseas why you should use SSS for your overseas move. The movers have years of experience with overseas moves avoid the stress and let the movers do the hard work they have contacts overseas which can make your move cheaper.

DANGEROUS GOODS CARGO



Dangerous Goods (DG) or dangerous goods are elements of substances and or dangerous goods that are very sensitive to air temperature, pressure and vibration and can interfere with human and animal health, can disrupt and endanger flight safety when transported by airplane air and can damage the transport equipment. Dangerous Goods (DG) can be transported by airplane and other transportation vehicles, by fulfilling the requirements, rules and procedures for handling DG in accordance with the type/class/classification of DG goods.

SSS accepts shipments of dangerous goods by following and complying with applicable regulations, including IATA standards on Dangerous Goods Regulations, AVSEC National Regulations and policies set by each airline operator.

DANGEROUS GOODS HAZARD CLASSES

There are 9 Classification classes and divisions based on IATA (International Air Transport Association) Dangerous Goods or hazardous materials.



Class 1 : Explosives
Explosives are materials or substances that are solid, Examples of flammable items are gunpowder, bullets, firecrackers and fireworks.



Class 2 : Flammable Gas (Gas Material)
All gaseous materials including compressed ones. Prohibited gas materials can range from flammable or non-flammable gases to toxic gases.

Class 2.1 : Flammable Gases
Examples of flammable gases are Butane, Hydrogen and Propane.

Class 2.2 : Non-Flammable Gas
Examples of non-combustible gases are compressed oxygen, helium and nitrogen.

Class 2.3 : Gas Poison
Examples of toxic gases are carbon monoxide, aerosols of low toxicity, and tear gas.



Class 3. Flammable Liquid
Flammable liquids are liquids or mixtures containing solid solutions or saturated solutions which are flammable at temperatures below 35 degrees Celsius and must not be exposed to heat or under a pressure of 101.3 kPa. Examples of flammable liquids are Certain Paints, Alcohol, Varnishes, Fuel Oil, Acetone.



Class 4. Flammable Solid
Flammable solids are materials in the form of solid objects that are flammable when exposed to water, friction, or gas jets and can cause an explosion in a short time. Flammable solids are divided into 3, namely solid objects that are flammable, explosive, and become flammable gases when exposed to water.

Class 4.1 Flammable Solid
Examples of flammable solids are Matches (matches), coal, sulfur, and nitronaphthalene.

Class 4.2 Explosive Solids
Examples of flammable substances are White Phosphorus, Yellow Phosphorus and Magnesium Dinamide.

Class 4.3 Solid objects become gases and are flammable when exposed to water
Examples include Calcium carbide, Sodium, Potassium Phosphide, Calcium Carbide.



Class 5. Oxidation
Goods that enter class 5 are goods that are easily oxidized or cause damage when exposed to oxygen. Goods that easily oxidize are divided into two, namely oxidizing substances and organic peroxides.

Class 5.1 : Oxidizing Substances
Examples of oxidizing agents are Calcium Chlorate, Ammonium Nitrate, Hydrogen Peroxide, Potassium Perchlorate, Potassium Permanganate and Concentrated Nitric Acid.

Class 5.2 : Organic Peroxides
Materials or goods that spoil easily due to exothermic influences at normal temperatures. Volatile items, if inhaled by humans cause dizziness or drowsiness. Examples of organic peroxides are glass fiber repair kits, Calcium Chlorate, Ammonium Nitrate, Dicyetyl Perdicarbonate, and Methyl Ethyl Ketone Peroxide.



Class 6. Toxic and Infectious Materials
This material can be a toxic substance (poisonous substance) and infectious substance (substance virus or bacteria).

Class 6.1 Toxic
Examples of toxic substances are methanol, benzene, arsenic trichloride and mercuric chloride, cyanide and pesticides.

Class 6.2: Infectious Substances
Examples of infectious substances are live viruses, live bacteria, the HIV virus, and vaccines.



Class 7: Radioactive Material
Examples of radioactive materials are Tritium, Uranium, Caesium 131, Iodine 132, and smoke detectors.



Class 8 : Corrosives Substances
Examples of corrosive substances are battery acid, bleach, sulfuric acid, hydrochloric acid, >2% sodium hydroxide, sulfuric acid and formic acid.



Class 9: Miscellaneous Dangerous Goods
Other examples of dangerous goods are magnets, screwdrivers, knives, vehicles, electric wheelchairs, air bags and lithium batteries.

DELIVERY MECHANISM

mechanism or procedure for sending Dangerous Goods by air, following the following steps:

1. Contact the SSS call center to make an order or reservation for delivery schedules, departure schedules, and delivery destinations, including the availability of space on the aircraft, as well as the possibility of connecting flights.
2. Fulfills all document requirements stipulated according to the type and class of Dangerous Goods sent.
3. Meets packaging and labeling requirements according to IATA Dangerous Regulation guidelines.

FOOD & BEVERAGE



CONSTRUCTION



CHEMICAL



MEDICAL EQUIPMENT



FURNITURE



CERAMICS



APPAREL



FASHION



HOME APPLIANCE



PHARMACEUTICAL



OIL & GAS



AGRICULTURE



TABLETOP & DIGITAL GAMES



AIRCRAFT SPAREPARTS



WOOD PELLET





PT. SURYA SURINDO NUSANTARA

Is a Shipping agency company in Indonesia Ports, was established in December 2021, located in Jakarta, Indonesia. We are here to serve the growing demand for trusted and reliable vessel agency.

”

To be a leading agency company with strategic investment to expand our services to the entire regions”.



CUSTOMER FIRST

We understand that by supporting our customers to achieve their objectives, we will ensure our own success.

COMMITMENT

As a service company, we are focusing into commitment work so that the produce high standard and quality service that can be accounted for by customer.

VISION & MISSION

VISION

To be the biggest and trusted shipping agency.

MISSION

Provide services that focus in each customer need. Provide solutions for every problem faced by customer.

SHIPPING AGENCY

We aim and commit to introduce world - class integrated agency services to meet customer solution and satisfaction, as well as to respond the growing global trade market.

We have experienced as vessel agent for various cargo's in Indonesia Ports : iron ore, coal, palm kernel expeller, palm kernel shell, wood pellet, granular urea in bulk, steel product, project cargo, anhydrous ammonia, etc.



VESSEL CLEARANCE

We have a good relationship and coordination with local authorities, as long as all administrative requirements are complete, system application is smooth, vessel is in good condition for sailing, then we can ensure that the port permit can be issued on time.

PORT INFORMATION

We commit to provide port information transparently and accurately, therefore owner can make the best decision and detailed planning thus loading/discharging activity goes smoothly.

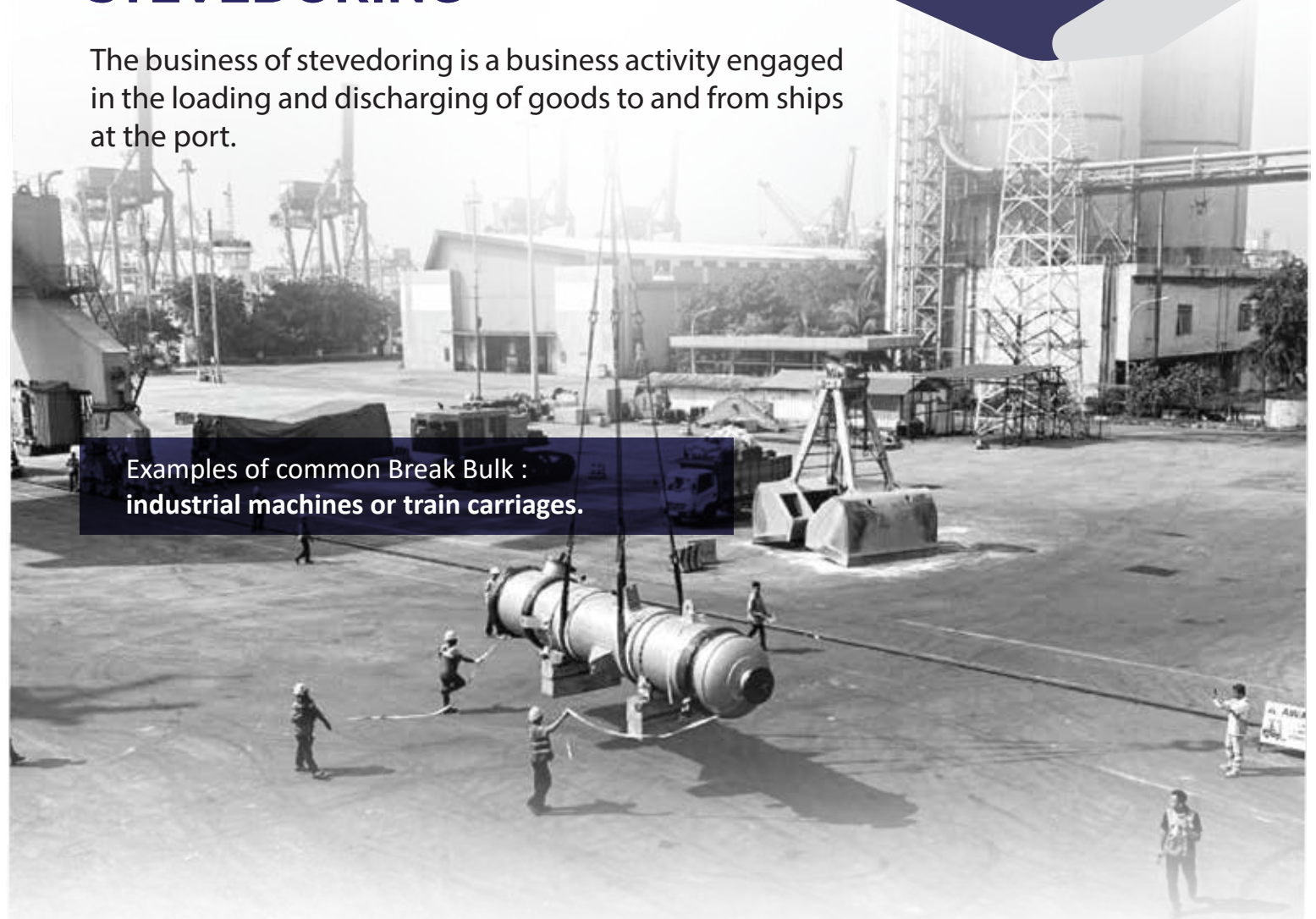
OWNER PROTECTIVE AGENT (OPA)

We understand, sometimes every existing shipping has a contract/condition where it's obligatory to appoint an agent recommended by the charterer. Therefore to protect the ship owner we can act as OPA (Owners Protective Agent) which will provide updated conditions and also the best cost for this service. As protective agents we ensure that your interests are well taken care of. This helps you avoid any conflict of interest that may arise with many stakeholders involved in a port call. Satisfaction of ship owners is our satisfaction as well.

STEVEDORING

The business of stevedoring is a business activity engaged in the loading and discharging of goods to and from ships at the port.

Examples of common Break Bulk :
industrial machines or train carriages.



PROJECT CARGO HANDLING

When you're still wondering how to move it, we've already got something in mind. From project forwarding, general cargo services, air freight and customs clearance to inland transportation, warehousing and consulting, our experienced specialists and strong partners all over the globe have everything it takes to make sure that when it comes to moving, nothing stands in your way.

AIR FREIGHT SERVICES

When time is of the essence, we transport your cargo by air. SSN applies the same unique approach to air freight as for all our other areas of business: provide our clients with seamless, full service to move a project to any location in the world. Get ready for takeoff!

SSN operates air freight consolidation hubs at strategic locations around the globe where items are expedited and sent out and our IATA-trained experts control documentation.

OCEAN FREIGHT SERVICES

SSN provides a variety of ocean freight services to any destination in the world. We have technical and commercial expertise, and treat each project individually with a client-centric approach.

OUR SERVICES INCLUDE:

- Less Than Container Loads (LCL).
- Full Container Loads (FCL).
- Roll-On/Roll-Off (RO/RO) cargo.
- Heavy lift and/or over-dimensional cargo.

EQUIPMENT LIST :

○ MODULE

Goldhofer 12 axle x 3 unit
with Prime Mover

○ CRANE

Linkbelt : 80 Ton x 2 units
Tadano : 25 Ton x 1 unit

○ FORKLIFT

Toyota : 3 Ton x 1 unit

EXPERIENCE :

- **KRAKATAU-POSCO PROJECT** (CIGADING, CIWANDAN, MERAK)
 - WE ARE HANDLING DISCHARGING WORK
 - CHECK PORT LINE-UP FOR BETTER BERTHING PLAN
- **GS PERTAMINA PROJECT** (CILACAP)
 - GS PERTAMINA PROJECT
 - WE ARE HANDLING DISCHARGING AND TRANSPORTATION
 - CILACAP PORT
- **KORINDO WIND TOWER PROJECT** (CIWANDAN)
 - HANDLING CARGO DURING (INLAND TRANSPORTATION)

PROJECT CARGO HANDLING TAKES SPECIAL CARE, EXPERTISE AND ATTENTION.

- Loading/Discharging Cargo
- Heavy Equipment
- Mobile Crane
- Cargo Supervisor
- Lashing/Unlashing On Barge

OUR PROJECT

PROJECT CARGO HANDLING



HUSBANDRY

We are providing service for signing on and signing off crew and their replacement and we able to provide the pickup and delivery to and from vessel.



SSN HUSBANDRY SERVICE

Delivers the best service for all your husbandry needs, with experience from our team to ensure the best performance during work with professionalism, and also will give best efficiency cost.

SERVICES INCLUDE :

- Special Service at all areas Outer port limit (OPL) in Indonesia.
- Crew change.
- Meet and Greet Services at Jakarta Airport, fast transit to and from vessels for crews traveling through airports and seaports.
- Immigration services, Letters of Invitation, Work & Transit Visa Applications.
- Visa C13 for foreign crew join to vessel in Indonesia.
- Visa C15/C17 for foreign technician/superintendent, etc. to visit vessel on board, nevertheless depend on local Immigration regulations.
- Travel assistance, Hotel accommodation, Purchase of domestic flight.
- Vehicle Rentals, Local Transportation Service.
- Cash to Master (CTM).
- Spares Parts Customs clearance and delivery.
- Supplies of bunker fuels, lubricants, chemicals, provisions.
- Support activities with workshops, contractors etc.

UNDERWATER CLEANING AND WORK

MAXIMUM SAFETY

We, SSN offer Hull Sanitation for all types of ships. Deep draft purgatory vessels are usually a pain for Dive contractors as large teams are required, and valuable equipment must be on site. We believe that only a competent and highly motivated team can do the job in the best way for customer satisfaction.

HULL CLEANING

SSN, well-expert in underwater Hull Cleaning services by remotely run vehicles by divers. Our team are innovatively develop can be adapt to all condition, such as deal with work in various water types and also different coating types.



FINAL REPORTS

SSN also offers accurate final reports consisting of high resolution photos and HD videos to our customers. We can do hull cleaning and inspection at the same time. Our services can be monitored on a screen in order providing total transparency.



“

Our highly trained personnel with the **technical expertise** and **many years of experience** in the field of underwater service, combined with modern technology and equipment, **It's guaranteed all divers work very well on schedule.**”

WORK

- Platform Maintenance & Repair
- Underwater Welding & Cutting
- Cathodic Protection Instalation
- Zinc anode instalation
- Hull Bottom Cleaning & inspection
- Ship Damage Repair
- Salvage Work
- Jetty Piles Inspection & Repair
- Underwater NDT Inspection
- Underwater Visual Inspection with CCTV, Video & Still Photography
- Underwater Visual With UW Drone
- Drilling Support
- Port / Jetty Construction
- Dredging
- ETC.

SHIP SPARE PART SUPPLY



SSD can be ordered from Indonesian ship owners (SAMUDERA / SPIL / etc)

order to suppliers in Korea/China/Japan / India.

TRADING

list of trading products :



GARMENT



MACHINERY



ELECTRONICS



WOOD PRODUCTS

DISTRIBUTOR IN INDONESIA

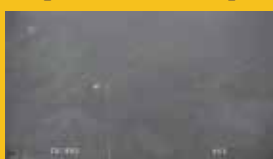
HVH-200
Video Enhancer



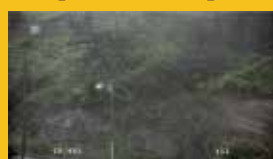
HIGH DEFINITION VIDEO ENHANCER

The HVH-200 can enhance every type of camera, from general optical cameras to thermal cameras, cameras using IR illuminators, specialized IR cameras, and others.

(BEFORE)



(AFTER)



COMPANY VALUES

HEALTH SAFETY AND ENVIRONMENT

Exceeding industry standards, prioritizing safety, health, and environmental performance, and continuously improving operations.

DEDICATED PEOPLE

Our exceptional team ensures flawless service delivery through integrated solutions.

CUSTOMER FIRST

Surpassing safety, health, and environmental standards while supporting customers and improving operations.

COMPLIANCE

Committed to ethical standards, our Compliance Program prevents and detects violations.

INTEGRATED SERVICES

Our comprehensive logistics solutions are robust, responsive, and flexible.

OUR REMARKABLE STRENGTHS



CUSTOMER SUPPORT

We understand that time is valuable especially when it comes to assuring that your cargo is loaded and dispatched effectively. Through our dedicated and professional staff we ensure your vessel will in and out smoothly, our team will fully attention, also give accurate and fast communication in handling overall disbursement control.

CLOSING

With a number of experiences above, allow us to serve your needs where we have also been supported by competent and experienced staff in their fields, together with this, we hope you don't hesitate to contact us if you need a partner for your business solution.

We are expecting with this, we can establish good business cooperation and meet to **customer satisfaction**.

Best Regard's

Justin OH

President Director

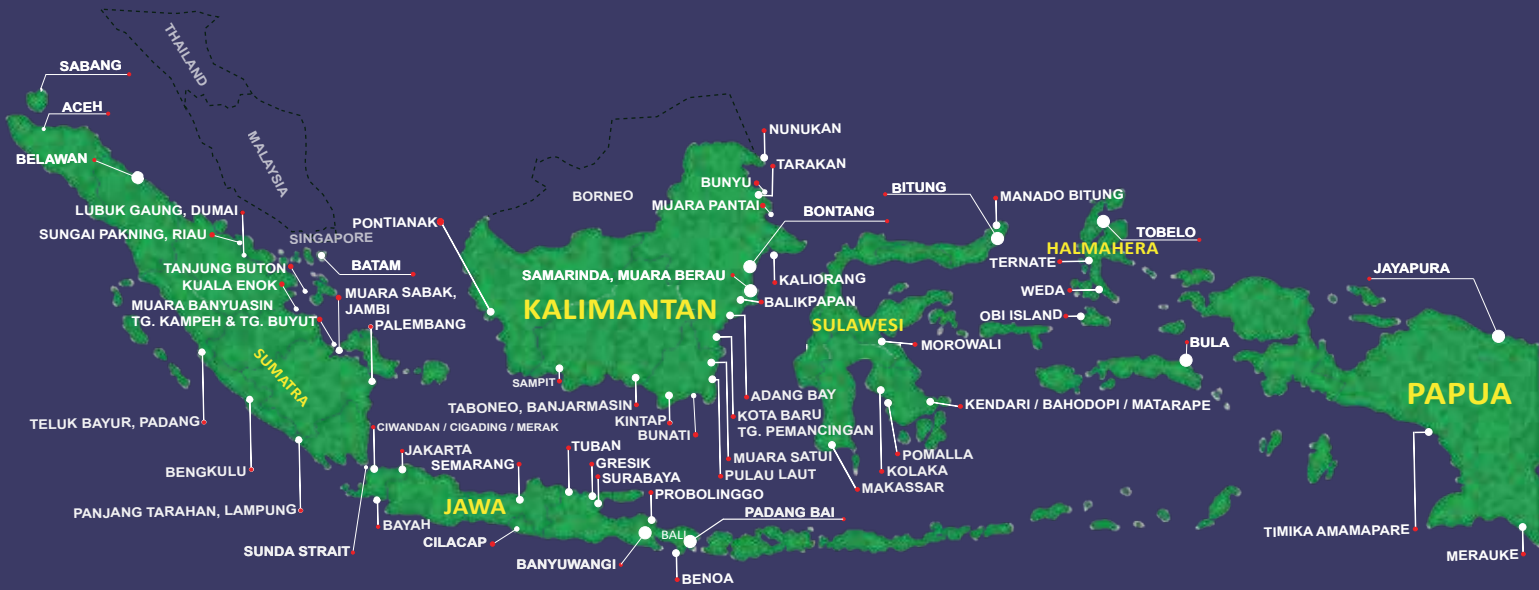
KANG SUN IL

Director



 **SSG ID**
 **www.ssgid.co.id**

INDONESIA SERVICE AREA



SERVICE AREA IN INDONESIA



- Sabang
- Aceh
- Belawan
- Lubuk Gaung, Dumai
- Padang
- Muara Sabak (Jambi)
- Teluk Bayur (Padang)
- Palembang
- Bengkulu
- Muara Banyuasin, Tg. Kampeh & Tg. Buyut (Palembang)
- Panjang, Tarahan (Lampung)
- Kuala Enok
- Tanjung Buton
- Sungai Pakning (Riau)
- Batam
- Jakarta
- Ciwandan / Cigading / Merak
- Bayah
- Cilacap
- Banyuwangi
- Semarang
- Surabaya
- Probolinggo
- Gresik
- Tuban
- Benoa
- Pontianak
- Sampit
- Taboneo, Asam Asam (Banjarmasin)
- Muara Berau, Muara Jawa (Samarinda)
- Kintap
- Nunukan
- Muara Satu
- Pulau Laut
- Kota Baru, Tg. Pemancingan
- Bunati
- Adang Bay
- Balikpapan
- Kaliorang
- Bontang
- Tarakan
- Bunyu
- Muara Pantai
- Nunukan
- Manado Bitung
- Morowali
- Kendari / Bahodopi / Matarape
- Pomalla
- Kolaka
- Makassar
- Tobelo
- Ternate
- Weda
- Obi Island
- Jayapura
- Bula
- Timika Amamapare
- Merauke

Contact Us :

Justin OH

President Director

+62 811-1572-929

justin@ssgid.co.id



KANG SUN IL

Director

+62 811-1929-722

sun@ssgid.co.id





BRANCH OFFICE



SURYA SURINDO GROUP



HEAD OFFICE

SURYA SURINDO GROUP

Komplek Gading Bukit Indah Blok H/26-27, RT.003 RW. 015, Kelurahan Kelapa Gading Barat, Kecamatan Kelapa Gading, Kota Administrasi Jakarta Utara 14240, DKI Jakarta.



 PALEMBANG BRANCH

 CILEGON BRANCH

 SURABAYA BRANCH



PT. SURYA SURINDO SAGARA

SURABAYA

Graha SA, 5th Floor, Unit 528, Jl. Raya Gubeng No 19-21, Surabaya 60281.

+62315035663
team.sub.sss@ssgid.co.id



PT. SURYA SURINDO NUSANTARA

PALEMBANG

Jl. Embacang No 55 Rt 35 Rw 12 Kelurahan Tiga_Puluh Ilir Kecamatan Ilir Barat Dua, Palembang 30144 - South Sumatera, Indonesia.

+62 711 555 6406
ssn.palembang@ssgid.co.id

CILEGON

Komplek Arga Bajapura, Jalan Argo Bromo Blok A6 Nomor 31, Kelurahan Kotasari, Kecamatan Grogol, Kota Cilegon, Propinsi Banten.

 **SSG ID**
 **www.ssgid.co.id**

Any Service You Need We Are Ready To Assist You.

PT. SSS

+62(21) 4585-2530
sss@ssgid.co.id

PT. SSN

+62(21) 4585-0303
ssn@ssnid.co.id

PT. SSD

+62(21) 4585-2530
ssd@ssgid.co.id

SSG ID

www.ssgid.co.id

COMPANY PROFILE
SURYA SURINDO GROUP

MAY
20
24

Komplek Gading Bukit Indah Blok H/26-27, RT.003 RW. 015,
Kelurahan Kelapa Gading Barat, Kecamatan Kelapa Gading,
Kota Administrasi Jakarta Utara 14240, DKI Jakarta.

